

## Polex™ Dry Spray Booths

### Polex™ DRY 3 m SPRAYBOOTH (2.25 m high)

#### Description

The Polex range of Dry Spraybooths are constructed from bolt-together sheetmetal panels. Dry paper filter media is fitted into the filter wall. The media is suitable to filter many paint and adhesive products. Spraybooths are supplied complete with axial extraction fan(s).

#### Operating Principle

The operator positions the object to be sprayed within the confines of the booth. Fresh air is drawn in through the front opening of the booth causing the overspray to be caught in the filter. The cleaned air is discharged out through the plenum behind the filter wall and out through a discharge duct.

#### Filter Monitoring

The booth is supplied complete with a manometer to measure the resistance through the filter media. A set point is marked on the device indicating when the filter media needs to be replaced.

#### Construction

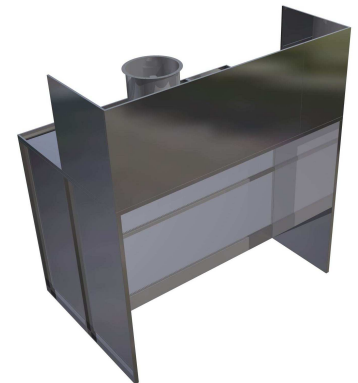
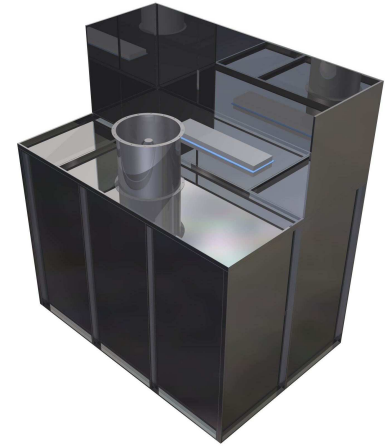
1 mm thick sheetmetal construction.

#### Filters

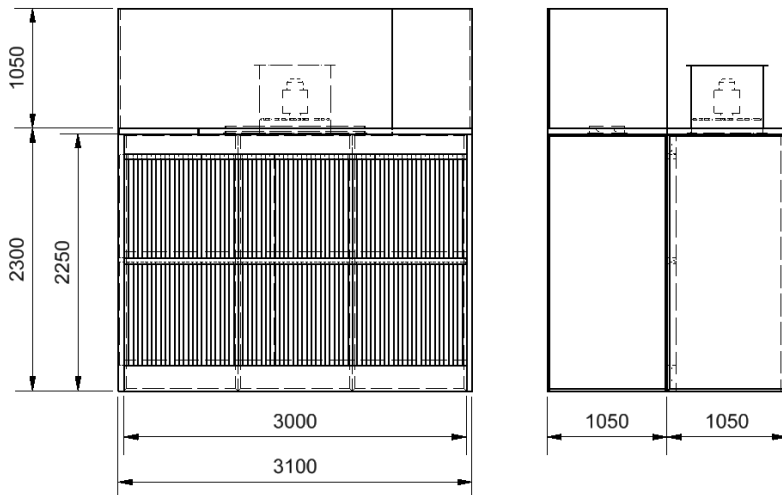
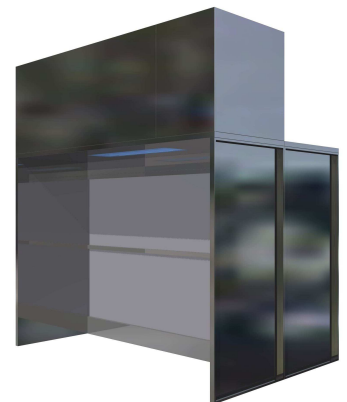
50 mm thick disposable cardboard filter media.

#### Applications

Spray painting (all paint types)



Adhesive spraying  
Vanishing



Model	Internal Width (mm)	External Width (mm)	Internal Height (mm)	Working Depth (mm)	Overall Depth (mm)	Airflow (L/s)	Fan Quantity	Fan Dia (mm)	Fan Motor Power (kW)	Sound Pressure (dBA @ 3 m)
SBD 3 / 2.25	3000	3100	2250	1050	2100	3375	1	630	1.5	61