

Polex Environmental Engineering Pty Ltd
ACN 121 129 842

SPRING RECOIL HOSE REELS

Description

The hose reels are designed for the extraction of vehicle exhaust fumes. A locking mechanism stops the hose at the desired height. The reel can be fitted on the wall or the ceiling. They can be used with a single fan or as part of a centralised extraction system. The reels are supplied complete with flexible hose and a safety stop. A selection of nozzles are available (sold separately).



Construction

- Pressed sheetmetal body.
- Crush proof Nylon black reinforced flexible hose suitable for use up to 200°C.

Applications

- Motorcycle, car and truck service workshops & dealerships
- Generators
- Army vehicles

Options

Electric recoil hose reels, Nozzles, Automatic closing valves.

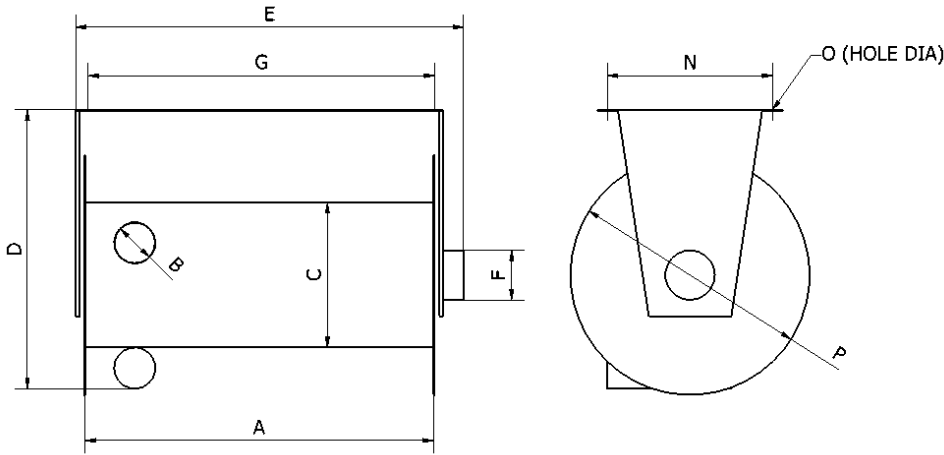
- **Systems for motorcycles, cars and trucks**
- **Spring recoil hose reels**
- **Nozzles to suit all makes of vehicles**
- **Designed for any airflow requirement**

Specifications

Model	Reel Type	Flexible Duct Diameter (mm)	Flexible Duct Length (m)	Recommended Air-flow (m ³ /h)	Air Outlet Diameter (mm)
APT-75/5-SB	APT	75	5	318	120
APT-75/7.5-SB	APT	75	7.5	318	120
APT-75/10-SB	APT	75	10	318	120
APTC-75/13-SB	APTC	75	13	318	120
APTC-100/5-SB	APTC	100	5	565	120
APTC-100/7.5-SB	APTC	100	7.5	565	120
APTC-100/10-SB	APTC	100	10	565	120
AM-100/13-SB	AM	100	13	565	150
AM-125/7.5-SB	AM	125	7.5	884	150
AM-125/10-SB	AM	125	10	884	150
AM-125/13-SB	AM	125	13	884	150
AM-MAXI-125/15-SB	AM-MAXI	125	15	884	150
AM-MAXI-125/17-SB	AM-MAXI	125	17	884	150
AM-150/7.5-SB	AM	150	7.5	1272	150
AM-150/10-SB	AM	150	10	1272	150
AM-MAXI-150/13-SB	AM-MAXI	150	13	1272	150
AM-MAXI-180/10-SB	AM-MAXI	180	5	1832	150
AM-MAXI-200/10-SB	AM-MAXI	200	10	2262	150

Polex Environmental Engineering Pty Ltd
ACN 121 129 842

SPRING RECOIL HOSE REELS



Dimensions

Model	A (mm)	B (mm)	C (mm)	D (mm)	E (mm)	F (mm)	G (mm)	N (mm)	O (mm)	P (mm)	Weight (kg)
APT-75/5-SB	600	75	350	600	709	120	639	246	10	540	40
APT-75/7.5-SB	600	75	350	600	709	120	639	246	10	540	43
APT-75/10-SB	600	75	350	600	709	120	639	246	10	540	46
APTC-75/13-SB	850	75	350	631	970	120	914	307	12	540	49
APTC-100/5-SB	850	100	350	676	970	120	914	311	12	580	45
APTC-100/7.5-SB	850	100	350	676	970	120	914	311	12	580	49
APTC-100/10-SB	850	100	350	676	970	120	914	311	12	580	53
AM-100/13-SB	960	100	450	740	1170	150	1096	432	12	670	55
AM-125/7.5-SB	720	125	450	795	930	150	856	444	12	730	45
AM-125/10-SB	720	125	450	795	930	150	856	444	12	730	59
AM-125/13-SB	960	125	450	795	1170	150	1096	444	12	730	61
AM-MAXI-125/15-SB	960	125	625	980	1200	150	966	530	12	875	60
AM-MAXI-125/17-SB	960	125	625	980	1200	150	966	530	12	875	62
AM-150/7.5-SB	960	150	450	845	1170	150	1096	455	12	780	51
AM-150/10-SB	960	150	450	845	1170	150	1096	455	12	780	55
AM-MAXI-150/13-SB	960	150	625	1030	1200	150	966	530	12	875	60
AM-MAXI-180/10-SB	960	180	625	1120	1200	150	966	542	12	985	60
AM-MAXI-200/10-SB	960	200	625	1175	1200	150	966	570	12	1053	65

Polex Environmental Engineering Pty Ltd
ACN 121 129 842

NOZZLES

Item	Hose Diameter (mm)	Suction Inlet Diameter (mm)	Picture
Rubber Nozzle			
BN 75/80	75	80	 BN
BN 75/140	75	140	
BN 100/140	100	140	
BN 125/140	125	140	
BN 100/200	100	200	
BN 125/200	125	200	
BN 150/200	150	200	
BN 180/200	180	200	
BN 200/200	200	200	
Rubber Nozzle With Extractable Cap And C.O. Inlet			
BNT 75/140	75	140	 BNT
BNT 100/140	100	140	
BNT 125/140	125	140	
Oval Twin Exhaust Rubber Nozzle			
BNA 75	75	165 x 88	 BNA
BNA 100	100	165 x 88	
Oval Twin Exhaust Rubber Nozzle			
BNA 75 P	75	165 x 88	 BNA P
BNA 100 P	100	165 x 88	
Rubber Nozzle With Manual Gripper			
BNPG 75/140	75	140	 BNPG
BNPG 100/140	100	140	
BNPG 100/200	100	200	
BNPG 125/200	125	200	
BNPG 150/200	150	200	
BNPG 180/200	180	200	
BNPG 200/200	200	200	
Rubber Nozzle With Manual Locking Gripper			
BNPM 75/140	75	140	 BNPM
BNPM 100/140	100	140	
BNPM 100/200	100	200	
BNPM 125/200	125	200	
BNPM 150/200	150	200	
BNPM 180/200	180	200	
BNPM 200/200	200	200	